

DH-SD22204I-GC

2MP 4x PTZ HDCVI Camera



- 1/2.7" 2Megapixel CMOS
- Powerful 4x optical zoom
- 120dB true WDR, 3D DNR
- Max. 25/30fps@1080P, 25/30/50/60fps@720P
- IP66, IK10



System Overview

Featuring with powerful optical zoom and accurate pan/tilt/zoom performance, the SD22 series PTZ camera can provide large monitoring range and great detail. The camera delivers 1080P resolution at 25/30 fps, with 4x optical zoom. SD22 series PTZ is equipped with smooth control, high quality image and good protection, which make it can meet small size of video surveillance applications.

Functions

Simplicity

HDCVI technology inherits the born feature of simplicity from traditional analog surveillance system, making itself a best choice for investment protection. HDCVI system can seamlessly upgrade the traditional analog system without replacing existing coaxial cabling. The plug and play approach enables full HD video surveillance without the hassle of configuring a network.

Environmental

With a temperature range of -30 °C to +60 °C (-22 °F to +140 °F), the camera is designed for extreme temperature environments. The camera complies to an IK10 impact rating making it capable of withstanding the equivalent of 55 kg (120 lbs) of force. Subjected and certified to rigorous dust and water immersion tests, the IP66 rating makes it suitable for demanding applications.

Technical Specification

Camera

| | |
|--------------------------|---|
| Image Sensor | 1/2.7" CMOS |
| Effective Pixels | 1920(H) x 1080(V), 2 Megapixels |
| Scanning System | Progressive |
| Electronic Shutter Speed | PAL: 1/3s~1/30,000s NTSC: 1/4s~1/30,000s |
| Minimum Illumination | Color: 0.05Lux@F1.6; B/W: 0.005Lux@F1.6 |
| S/N Ratio | More than 55dB |
| IR Distance | N/A |
| IR On/Off Control | N/A |
| IR LEDs | N/A |

Lens

| | |
|----------------------|-----------------|
| Focal Length | 2.7mm~11mm |
| Max. Aperture | F1.6 |
| Angle of View | H: 112.5° ~ 30° |
| Optical Zoom | 4x |
| Focus Control | Auto/Manual |
| Close Focus Distance | 100mm~ 1000mm |

DORI Distance

*Note: The DORI distance is a "general proximity" of distance which makes it easy to pinpoint the right camera for your needs. The DORI distance is calculated based on sensor specification and lab test result according to EN 62676-4 which defines the criteria for Detect, Observe, Recognize and Identify respectively.

| Detect | Observe | Recognize | Identify |
|-------------|------------|-----------|-----------|
| 120m(394ft) | 48m(157ft) | 24m(79ft) | 12m(39ft) |

PTZ

| | |
|----------------------|---|
| Pan/Tilt Range | Pan: 0° ~ 355°; Tilt: 0° ~ 90° |
| Manual Control Speed | Pan: 0.1° ~100° /s; Tilt: 0.1° ~60° /s |
| Preset Speed | Pan: 100° /s; Tilt: 60° /s |
| Presets | 300 |
| PTZ Mode | 8 Tour |
| Speed Setup | Human-oriented focal Length/ speed adaptation |
| Power up Action | Auto restore to previous PTZ and lens status after power failure |
| Idle Motion | Activate Preset/Tour if there is no command in the specified period |
| Protocol | DH-SD, Pelco-P/D (Auto recognition) |

Video

| | |
|--------------|--|
| Resolution | 1080P(1920×1080)/720P(1280×720) |
| Frame Rate | 25/30fps@1080P, 25/30/50/60fps@720P |
| Video Output | 1-channel BNC high definition video output/ CVBS standard definition video output (switchable) |

| | |
|------------------------|--------------------------------|
| Day/Night | Auto(ICR) / Color / B/W |
| OSD Menu | Support |
| Backlight Compensation | BLC / HLC / WDR(120dB) |
| White Balance | Auto,ATW,Indoor,Outdoor,Manual |
| Gain Control | Auto / Manual |
| Noise Reduction | Ultra DNR (2D/3D) |
| Digital Zoom | 16x |
| Flip | 180° |
| Privacy Masking | N/A |

Certifications

| | |
|----------------|--|
| Certifications | CE: EN55032/EN55024/EN50130-4 FCC: Part15 subpartB,ANSI C63.4- 2014 UL: UL60950-1+CAN/CSA C22.2,No.60950-1 |
|----------------|--|

Interface

| | |
|-----------------|-----|
| Video Interface | 1 |
| Audio Interface | N/A |
| RS485 | 1 |
| Alarm I/O | N/A |

Electrical

| | |
|-------------------|-------------|
| Power Supply | DC 12V/1.5A |
| Power Consumption | 10W |

Environmental

| | |
|----------------------|--|
| Operating Conditions | -30°C ~ 60°C (-22°F ~ +140°F) / Less than 95% RH |
| Ingress Protection | IP66 |
| Vandal Resistance | IK10 |

Construction

| | |
|--------------|---------------------|
| Casing | Metal |
| Dimensions | Φ122 (mm) x 89 (mm) |
| Net Weight | 0.6kg(1.32lb) |
| Gross Weight | 0.65kg(1.43lb) |

| Ordering Information | | |
|----------------------|-----------------|------------------------------------|
| Type | Part Number | Description |
| 2MP PTZ Camera | DH-SD22204I-GC | 2MP 4x PTZ HDCVI Camera, WDR, PAL |
| | DH-SD22204IN-GC | 2MP 4x PTZ HDCVI Camera, WDR, NTSC |
| | SD22204I-GC | 2MP 4x PTZ HDCVI Camera, WDR, PAL |
| | SD22204IN-GC | 2MP 4x PTZ HDCVI Camera, WDR, NTSC |
| Accessories | PFA137 | Mount Adapter |
| | DC12V/2A | Power Adapter |
| | PFB203W | Wall Mount |
| | PFB200C | In-ceiling Mount |
| | PFA152-E | Pole Mount |

Accessories

Optional:



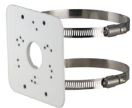
PFA137
Mount Adapter



DC12V/2A
Power Adapter



PFB203W
Wall Mount



PFA152-E
Pole Mount



PFB200C
Ceiling Mount

| Wall Mount | In-ceiling Mount |
|--------------------|--------------------|
| PFB203W | PFB200C |
| | |
| Junction Box Mount | Pole Mount |
| PFA137 | PFB203W + PFA152-E |
| | |

Dimensions (mm)

